

**VOLTECH O AND M SERVICES PVT. LTD.**

We deliver your needs....



Received the  
**Best O&M**  
Service Provider Award 2017 - 18  
from Mission Energy Foundation



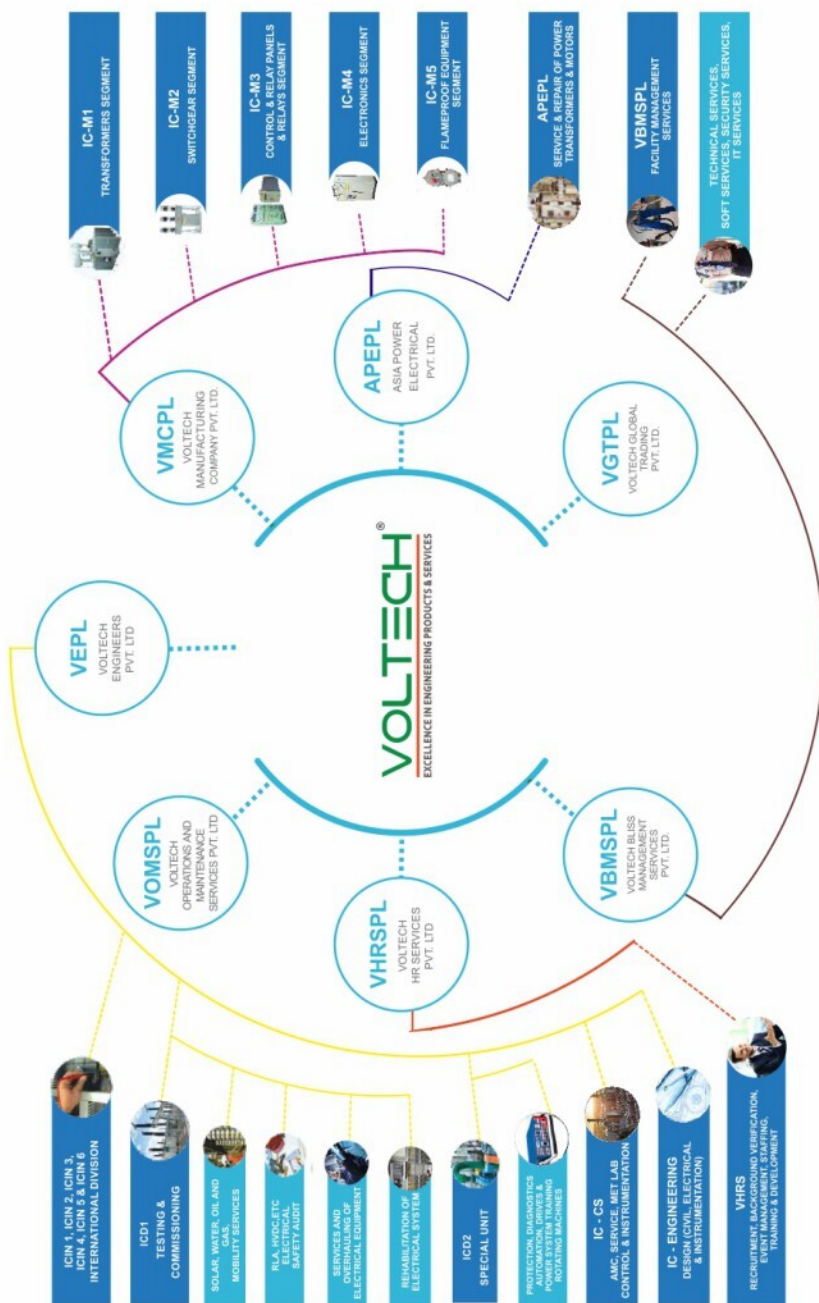


# Table of Contents

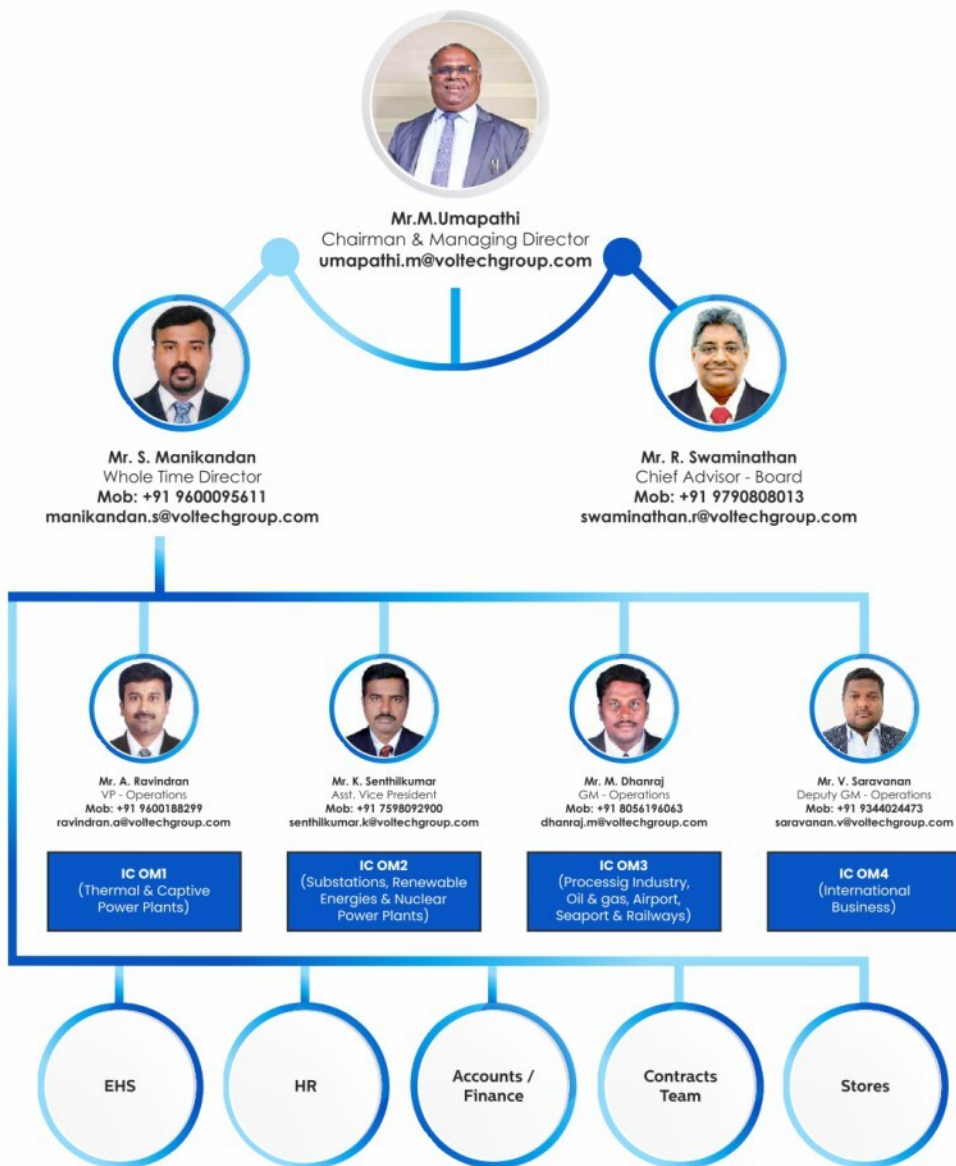
Group Organization Chart	04
Key Personnel	05
Chairman's Message	06
Area of Services	11
HSE Statistics	12
HSE Management	13
O & M Experience	15
Credentials	41
Clientele	46
Global Expansion	47



# ORGANISATION FLOW CHART VOLTECH GROUP OF COMPANIES



# VOMS Organisation Chart - Key Personnel



# Chairman's Message



Dear and Esteemed customer,

I extend you my warmest greetings on behalf of the Voltech Group.

Voltech Operation and Maintenance Services (VOMS), a subsidiary of the Voltech Group, is a company dedicated to planning and managing the operation and maintenance of various industrial and commercial assets to ensure that safe operational performance is optimized and availability is maximized while minimizing the impact of costs. As an integrated asset management service provider, our core proficiency remains our extensive experience and specialization in the areas of power infrastructure. Our areas of experience and service also extend to refineries and petrochemicals, sugar industry, oil & gas, steel plants, utilities, off-sites as well as renewable energy power plants.

While reducing the costs at the customer's end, VOMS delivers safe solutions and

reliable expertise so that our client's manpower, projects and processes run efficiently. We understand our clients' need for reliable, relentless service that's keeps accountability high and revenue on an upswing. Our experience in the field for over two decades has given us the high level of industrial wisdom and personnel expertise that would allow us to attend to your needs around the clock. VOMS as a business partner has the capabilities to bring these qualities to you.

I also assure you that VOMS is a top-safety performer, certified by ISO 9001:2015, ISO 14001:2015 & ISO 45001:2018, and prides itself in exercising the highest safety, environmental and quality standards. **A winner of the prestigious "Best O&M Service Provider" award by the Mission Energy foundation in 2018 & also we achieved 2.5 Million Safe Man Hours in 2022-23**, our credentials and accolades speak for itself in a crowded market where quality and differentiation are the crucial drivers for organizational excellence.

Our organization has been created by the building blocks of hard work, persistence and an obsession for quality. We have never shirked from challenges, and have continuously outdone our efforts at being the best in the field. Voltech's rapid growth trajectory of the past decade and its exemplary reports of sales and profit would stand our claims in good stead. The Voltech brand has become an established presence within the power sector; not only in India, but across the world, with many significant achievements in the Middle-East, South-East Asia, Africa and the SAARC region. Our expanded footprint into Europe, particularly the United Kingdom and our newly established offices in the American continents continue to open up new vistas for us to explore in the coming years. We ask you to undertake this journey with us.

This company brochure is specifically designed to provide you with the most up-to-date information about our organization in terms of our experience, capabilities and technicalities in a comprehensive way. Our offices work around the clock to attend to your calls and queries about any service that we endeavour to offer. Please peruse through this brochure as a ready reference, and contact us at your own pleasure. It is our spirited endeavour to associate with you, and we are pleased to invite you to experience the best of our product and service offerings.

You imagine it- We will deliver it!

Regards



**M. Umaphathi**  
(Chairman & Managing Director)

## Vision & Mission

### Vision

To be a Global leader in Asset Management Solutions

### Mission

We provide High Quality, Safe, Cost effective, Reliable Asset Management Solutions and Technical supports as per customer needs and satisfaction using world class best practices

## About VOMS

Voltech offers professional services in the Operation and Maintenance of a wide range of Power Plants, Substations, Switchyard of Industrial Sectors. These include Power Generation (Thermal, Nuclear, Combined Cycle, Diesel, Hydro and Other Renewable Energy), Oil & Gas Refineries, Airport, Seaport, Railways and Water Treatment and Industrial Facilities.

Voltech can provide Total Operation and Maintenance services ranging from project development support through mobilization services to O & M contracts from Pre-commissioning, commissioning and start-up of commercial operation, supporting the whole project life cycle. The dynamic contribution of over 2000 employees is our immense potential.



# Integrated Asset Management Services

## Why we are in this field

- Growing demand in the market for outsourcing the O & M activities as the Client can focus more on the core business improvements rather than focusing on day to day Operation & Maintenance of the plant.
- Industries are thrusting more responsibilities on the service providers to avail maximum benefits in terms of quality and quantity.
- Industries are looking for service providers who can take up complete ownership of the equipment / assets of their plant.
- Client can get rid of Total Manpower / HR / IR issues and concentrate on their core business.

## VOMS Five Values

- Safety- Anywhere and Everywhere.
- People-We as a Valued Team grow in our capabilities. We are proud to say Voltech O and M – a great place to belong.
- Integrity-We maintain our personal and professional integrity at all times.
- Functional Excellence-We drive continuous improvements in work processes, organizational capabilities etc.
- General Interest-We work cross functionally among other divisions to achieve Voltech Group vision.





## Benefits that can be offered by VOMSPL

Experienced in providing safe, high quality, cost effective, reliable O & M services and technical supports as per customer needs and satisfaction using World class best practices by way of

- Strong Safety record - on Health, Safety & Environment.
- Reducing Cost/Cost savings/Improve the Gross Margins.
- Continuous Improvement on quality.
- Optimizing the Inventory.
- Skilled and competent Manpower support- Electrical, Mechanical, Control & Instrumentation, Planning and Support services.
- Strong Technical skills to support and carry out Erection, Commissioning, Operation, Maintenance and Shutdown activities in Power, Substation, Oil & gas and Petrochemical industries.
- Maintain all Guarantee parameters / KPIs-Key Performance Indicators.
- Carry out scheduled Maintenance at specified intervals based on performance and OEM recommendations.
- Strong Training capabilities.
- Preventive Maintenance, Productive Maintenance, Total Productive Maintenance & Breakdown Maintenance.



## Voltech O And M Capabilities

- Strong Technical skills to carry out Erection, Testing, Commissioning, Operation, Maintenance, Project Management, Shutdown activities in Power industries, Oil & gas and Petrochemical Industries.
- Skilled Manpower support for O&M and Consultancy services
- We are also offering Technical Consultancy support services for RCM, CMMS, Equipment strategy implementation, stores verification, Materials coding & cataloging with experienced employees and some of the description as below,

## RCM - Reliability Centered Maintenance

RCM is a "process used to determine what must be done to ensure that any Physical asset continues to fulfill its intended functions in its present context"

It is a highly structured frame work that allows users to determine the most appropriate strategy for difference assets.

## Total Productive Maintenance

Total Productive Maintenance (TPM) is a process that enrolls the entire organization in asset management responsibility. This is achieved by utilizing problem-solving teams called Equipment Improvement Teams, engaging the operator in "basic care "of the equipment through Autonomous Maintenance, focusing improvement efforts toward Maintenance Excellence, enhancing skills and knowledge, and improving how equipment is designed and manufactured.

TPM represents a shift in the way we think about maintenance. This process is based on a philosophy of maintenance that is difference from traditional maintenance.

TPM has evolved through a series of steps.....

- Total Planning activities-Retrieving PM activities from CMMS, Reviewing, Planning, Scheduling, Execution and Close out of the tasks/activities in SAP and meeting the KPIs through planning Tools.
- Technical Training for Engineers and Technicians.

## Area of Services

**Power Plant  
Industry**



**Substation**



**Refinery and  
Petro Chemicals**



**Process  
Industry**



**Oil & Gas  
Industry**



**Steel Industry**



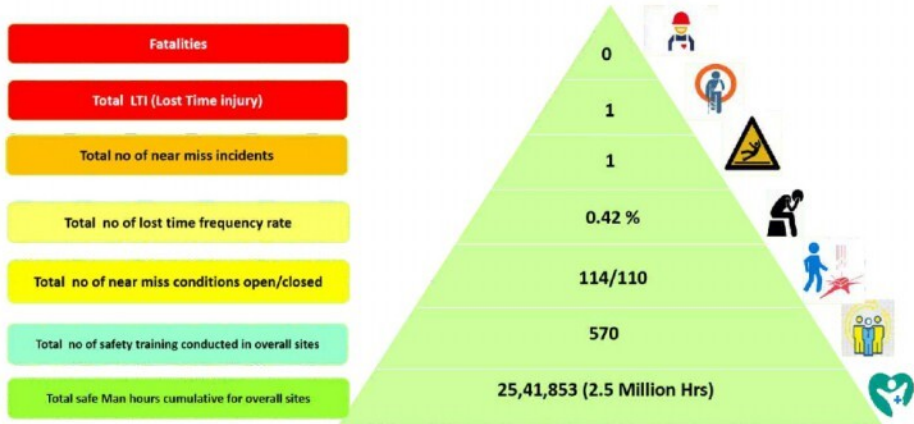
**Railways, Seaport  
and Airport**



**Renewable  
Energy**



# 2022 - 2023 HSE Statistics



## SAFETY IS OUR FIRST PRIORITY

- 4 Star Rated contractor safety management award from TATA STEEL LIMITED- Kalinganagar.
- Best Safety Performing Agency From KSK- Akaltara
- Best 5S for O & M category FY-2018 from Vedanta Group @BALCO – Vendus meet.
- Best safety Icon of the month award from vedanta Limited.
- Kaizen gold award from BALCO
- Best innovation Kaizen Award from Vedanta Limited - Jharsuguda





# HSE Management

To provide the highest Quality as well as Professional Occupational Health & Safety Services to our Employees. To establish and meet the client's needs in terms of Occupational Health & Safety Management. To assist our clients in providing employees a healthy and safe working environment, free of hazards.

We believe that accidents don't have to happen and that they can be prevented. Thus we aim to assist industries in the prevention of accidents and injuries through Auditing and Training. Our highly experienced and well-trained staff and Safety Officers have the practical and theoretical expertise to assist our workmen in the prevention of losses caused by accidents.



- Leadership Accountability
- Comply With EHS Laws
- Risk Assessment And Hazard Control
- Incident Reporting And Investigation
- Risk Control Program
- Work Place Safety Awareness
- Contractor Safety Program
- Strengthen Existing H&S Program



# Services Offered for Power, Oil & Gas, Petro Chemical, Steel & Sugar Industries

- Day to day Operation and Maintenance of the plant & Utilities.
- Complete plant staffing.
- Planned and unplanned Maintenance services.
- Maintenance which includes-Preventive, Predictive, Pro active (RCM,TPM).
- Startup / Shutdown Support.
- Inventory management.
- Local and remote monitoring and diagnostics.
- Comprehensive training.
- Health, Safety & Environment programs.
- Site-specific documentation and procedure, Method statement development.
- Site-specific CMMS -Computerized Maintenance Management programs.
- Equipment service and repair.
- Utilization of local and remote monitoring and diagnostics.
- Spare parts, Consumables and tools.
- Switchgear Maintenance and Management.
- Retrofitting and refurbishment of Distribution and Power Transformers.
- Power delivery.
- Fuel Management.

# O & M Experience - Ongoing Jobs

## Thermal Power Plant

### NTPC LIMITED - Telangana Super Thermal Power Station

<b>Capacity of Plant</b>	: 2 X 800 MW Thermal Power Plant
<b>Scope of Work</b>	: Biennial Mega contract for C and I and EMD Stage 1
<b>Location</b>	: Peddapalli, Telangana

### NTPC LIMITED - Lara Super Thermal Power Station

<b>Capacity of Plant</b>	: 2X800 MW Thermal Power Plant
<b>Scope of Work</b>	: Long Term Maintenance Contract for EMD and C&I
<b>Location</b>	: Lara, Chhattisgarh

### NTPC LIMITED - Darlipalli Super Thermal Power Station

<b>Capacity of Plant</b>	: 2X800 MW Thermal Power Plant
<b>Scope of Work</b>	: Long Term O & M Contract for Electrical C&I Systems
<b>Location</b>	: Darlipali, Odisha

### NTPC LIMITED - Sipat Super Thermal Power Station

<b>Capacity of Plant</b>	: Stage - I: 3x 660 MW, Stage -II: 2x 500 MW Thermal Power Station
<b>Scope of Work</b>	: PM, PDM, Shift Maintenance and Overhauling Contract of EMD CHP Area
<b>Location</b>	: Sipat, Chhattisgarh

### NTPC LIMITED - Kahalgaon Super Thermal Power Project

<b>Capacity of Plant</b>	: Stage - I: 4 X 210 MW, 3 X 500 MW Thermal Power Station
<b>Scope of Work</b>	: 1. ARC of STAGE-1 & 2 C&I off Site Including Ash bagging and Ash Brick Plant 2. Biennial Contract for Switchyard, Transformers and Batteries
<b>Location</b>	: Kahalgaon, Bihar

### NTPC LIMITED - Singrauli Super Thermal Power Station

<b>Capacity of Plant</b>	: 2X500MW Thermal Power Plant
<b>Scope of Work</b>	: Overhauling, Breakdown and Preventive Maintenance of TG Equipment
<b>Location</b>	: Singrauli, Madhya Pradesh

# O & M Experience - Ongoing Jobs

## Thermal Power Plant

### NTPC LIMITED - Bongaigaon Thermal Power Project

<b>Capacity of Plant</b>	: 240 MW Thermal Power Plant
<b>Scope of Work</b>	: Biennial Maintenance Contract for Equipments in Turbine & Auxiliaries Area
<b>Location</b>	: Bongaigaon, Assam

### NTPC LIMITED - North Karanpura Super Thermal Power Project

<b>Capacity of Plant</b>	: 3X660MW Thermal Power Station
<b>Scope of Work</b>	: Long Term Mega O&M Contract For Electrical and C&I Systems
<b>Location</b>	: North Karanpura, Jharkhand

### NTPC LIMITED - Talcher Super Thermal Power Station

<b>Capacity of Plant</b>	: 6 × 500 MW Thermal Power Plant
<b>Scope of Work</b>	: 1. BRC for Maintenance and Overhauling Of HT Motors 2. Maintenance Contract for C and I System
<b>Location</b>	: Kaniha, Odisha





# O & M Experience - Ongoing Jobs

## Thermal Power Plant

### NTPC TAMILNADU ENERGY (NTECL) – Vallur Thermal Power Plant

<b>Capacity of Plant</b>	: 3 x 500 MW Thermal Power Plant
<b>Scope of Work</b>	: Providing round the clock operation assistance in main plant & offsite equipment
<b>Location</b>	: Ponneri, Vallur, Chennai

### ARAVALI POWER COMPANY PVT LTD – Indira Gandhi Super Thermal Power Plant

<b>Capacity of Plant</b>	: 3 x 500 MW Thermal Power Plant
<b>Scope of Work</b>	: Running, Breakdown maintenance & overhauling of pumps, compressor, fan, valve, deaerator, Pre heater, piping etc. of TG & Auxiliaries
<b>Location</b>	: Jharli, Haryana

### KSK Mahanadi Power Company Limited

<b>Capacity of Plant</b>	: 6 X 600 MW Thermal Power Plant
<b>Scope of Work</b>	: Operation And Maintenance of Electrical and C&I Works at 6 x 600 MW Thermal Power Plant
<b>Location</b>	: Akaltara, Chhattisgarh.

### KONKAN LNG LIMITED

<b>Capacity of Plant</b>	: 5 MMTPA of LNG processing unit
<b>Scope of Work</b>	: Annual maintenance contract (AMC) for Mechanical department
<b>Location</b>	: Ratnagiri, Maharashtra

### Damodar Valley Corporation, Mejia Thermal Power Station

<b>Capacity of Plant</b>	: 4x210MW Thermal Power Plant
<b>Scope of Work</b>	: ARC for day to day maintenance of to Generator, motorized actuators, DG Set, Electrical Cranes & Hoists, HT Bus duct, Battery Charger, Battery Bank & illumination system pertaining to Generator group for unit#1 to 6.
<b>Location</b>	: Mejia, West Bangal

### Jindal Power Limited

<b>Capacity of Plant</b>	: 2 X 150 MW Thermal Power Plant
<b>Scope of Work</b>	: Operation And Maintenance Services for Electrical Maintenance 2X150MW Thermal Power Plant
<b>Location</b>	: Dhule, Maharashtra

# O & M Experience - Ongoing Jobs

## International Jobs

### Bangladesh – India Friendship Power Company Pvt. Ltd. (BIFPCL)

<b>Capacity of Plant</b>	: 2X660MW Thermal Power Plant
<b>Scope of Work</b>	: Electrical & C&I Maintenance Contract of Main plant Equipment Including Switchyard & Offsite areas of 2X600MW Maitree Super Thermal Power Project
<b>Location</b>	: Rampal, Bagerhat, Bangladesh

## Nuclear Power Plant

### NPCIL – KUDANKULAM NUCLEAR POWER PLANT, KUDANKULAM, TAMILNADU

<b>Capacity of Plant</b>	: 2 × 1000 MW Nuclear Power plant
<b>Scope of Work</b>	: Support services for Operation and Monitoring of various systems and updating of operating systems & equipment data's of KKNPP Unit-1&2 for 24 Months

<b>Capacity of Plant</b>	: 2 × 1000 MW Nuclear Power plant
<b>Scope of Work</b>	: Assistance for Maintenance of Main Plant Process I and C at KKNPP1 and 2

<b>Capacity of Plant</b>	: 2 × 1000 MW Nuclear Power plant, 230/400 KV Substation
<b>Scope of Work</b>	: Operation and maintenance support for UGV, UGW, Infra Structure STP, OHT and Ventilation systems

<b>Capacity of Plant</b>	: 2 × 1000 MW Nuclear Power plant, 230/400 KV Substation
<b>Scope of Work</b>	: Operation & Maintenance of 230KV & 400KV GIS

<b>Capacity of Plant</b>	: 2 × 1000 MW Nuclear Power plant
<b>Scope of Work</b>	: Contract for Maintenance of low voltage (=415 V) switchgears / MCCs / ACDBs / DCDBs & 6 / 0.4 K V dry type auxiliary transformers

<b>Capacity of Plant</b>	: 2 × 1000 MW Nuclear Power plant, 230/400 KV Substation
<b>Scope of Work</b>	: Assistance maintenance of ESFAS System I&C

<b>Capacity of Plant</b>	: 2 × 1000 MW Nuclear Power plant, 230/400 KV Substation
<b>Scope of Work</b>	: Hot Oil Circulation in power transformers shunt reactors at KKNPP 1 and 2.

<b>Capacity of Plant</b>	: 2 × 1000 MW Nuclear Power plant, 230/400 KV Substation
<b>Scope of Work</b>	: Maintenance of Electrical Part of Process Systems in Main Plant Area Inside Operating Island at KKNPP-1&2

# O & M Experience - Ongoing Jobs

## Hydro Power Plant

### NHPC LTD

- Capacity of Plant** : 3X110 MW Hydro Power Station
- Scope of Work** : Round the clock Maintenance of EM plant and machinery at Power House Transformer Cavern Valve House and switchyard of 3X110 MW Kishanganga Power Station PKG300
- Location** : Kishanganga, Jammu & Kashmir

## Substations & Renewable Energy



### Sasan (Reliance) Power Limited

- Capacity of Plant** : 765KV, 400KV & 132KV Substations of 6x660 MW Power Plant
- Scope of Work** : AMC For Switchyards (765KV, 400KV & 132KV) including HT (33KV) and LT Switchgears
- Location** : Singrauli, Madhya Pradesh.

### Amplus Green Power Pvt. Ltd

- Capacity of Plant** : 132/33KV Pooling Substation - 70MW of Solar Park
- Scope of Work** : Operation and Maintenance for 132/33KV Plant Sub Station
- Location** : Mirzapur, Uttarpradesh

### Amplus Sun Solutions Pvt. Ltd

- Capacity of Plant** : 132/33KV Pooling Substation - 50MW of Solar Park
- Scope of Work** : Operation and Maintenance for 132/33KV Plant Sub Station and associated equipments
- Location** : Khanak, Haryana

### Amplus KN Solar Pvt. Ltd

- Capacity of Plant** : 220/33KV Pooling Substation of 175MWp Solar Farm
- Scope of Work** : Operation and Maintenance service of 220/33kv Pooling Substation with 2nos. 80/100MVA Power Transformer for 170MW PV Solar Power Plant & 220kV line (7km)
- Location** : Gadag, Karnataka.

# O & M Experience - Ongoing Jobs

## Substations & Renewable Energy

### Siemens Gamesa Renewable Power Pvt. Ltd

**Capacity of Plant** : 100MW Solar Power Plant  
**Scope of Work** : Operation and Maintenance of 100 MW Solar Power Plant at NLC Kayathar  
**Location** : Kayathar, Tuticorin, Tamilnadu

### Siemens Gamesa Renewable Power Pvt. Ltd

**Capacity of Plant** : 22MW Solar Power Plant  
**Scope of Work** : Operation and Maintenance of 22 MW Solar Power Plant  
**Location** : Ramnagar, Tirunelveli, Tamilnadu

### Siemens Gamesa Renewable Power Pvt. Ltd

**Capacity of Plant** : 20MW Solar Power Plant  
**Scope of Work** : Operation and Maintenance of 20 MW Solar Power Plant  
**Location** : Vedasandur, Dindigul, Tamilnadu

### Siemens Gamesa Renewable Power Pvt. Ltd

**Capacity of Plant** : 20MW Solar Power Plant  
**Scope of Work** : Operation and Maintenance of 20 MW Solar Power Plant  
**Location** : Chinthamanipatti, Karur, Tamilnadu

### Siemens Gamesa Renewable Power Pvt. Ltd

**Capacity of Plant** : 15MW Solar Power Plant  
**Scope of Work** : Operation and Maintenance of 15 MW Solar Power Plant  
**Location** : Kinathukadavu, Coimbatore, Tamilnadu

### Siemens Gamesa Renewable Power Pvt. Ltd

**Capacity of Plant** : 230KV/33KV Substation, 33KV HT Line - 198MW Wind Farm  
**Scope of Work** : Operation and Maintenance of 230KV/33KV substation and 33kV HT line Maintenance at Poovani  
**Location** : Poovani, Tuticorin, Tamilnadu

### Siemens Gamesa Renewable Power Pvt. Ltd

**Capacity of Plant** : 230KV/33KV Substation - 300MW Wind Farm  
**Scope of Work** : Operation and Maintenance of 230KV/33KV substation at Kayathar  
**Location** : Kayathar, Tuticorin, Tamilnadu



# O & M Experience - Ongoing Jobs

## Substations & Renewable Energy

### Siemens Gamesa Renewable Power Pvt. Ltd

**Capacity of Plant** : 110KV/33KV Pooling Substation - 62MW Wind Farm  
**Scope of Work** : Operation and Maintenance of 110KV/33KV substation at Palayam  
**Location** : Palayam, Tamilnadu

### Siemens Gamesa Renewable Power Pvt. Ltd

**Capacity of Plant** : 110/33KV Pooling Substation - 60MW Wind Farm  
**Scope of Work** : Operation and Maintenance of Substation, WTG Operation and Maintenance of 33KV HT Line  
**Location** : Lingasugur, Karnataka

### Siemens Gamesa Renewable Power Pvt. Ltd

**Capacity of Plant** : 110/33KV Pooling Substation - 60.35MW Wind Farm  
**Scope of Work** : Operation and Maintenance of Substation, WTG Operation and Maintenance of 33KV HT Line  
**Location** : Gurmatakal, Karnataka

### Siemens Gamesa Renewable Power Pvt. Ltd

**Capacity of Plant** : 110/33KV Pooling Substation - 60MW Wind Farm  
**Scope of Work** : Operation and Maintenance of Substation, WTG Operation and Maintenance of 33KV HT Line  
**Location** : Gudadanal, Karnataka

### Siemens Gamesa Renewable Power Pvt. Ltd

**Capacity of Plant** : 33KV/230KV Substation - 300MW Wind Farm  
**Scope of Work** : Technical Contract for WTG Operation, HT Line Maintenance & Operation And Maintenance of 33KV/230KV Substation  
**Location** : Gadag, Karnataka

### Siemens Gamesa Renewable Power Pvt. Ltd

**Capacity of Plant** : 220/33KV Substation - 116MW Wind Farm  
**Scope of Work** : Technical Contract for Operation and Maintenance of WTG, HT Line Maintenance & Operation And Maintenance of 220/33KV Substation  
**Location** : Molagavalli, Andrapradesh

### Siemens Gamesa Renewable Power Pvt. Ltd

**Capacity of Plant** : 230KV/33KV Substation - 100MW Solar Plant  
**Scope of Work** : Operation and Maintenance of 230KV/33KV substation at Kayathar  
**Location** : Kayathar, Tuticorin, Tamilnadu

# O & M Experience - Ongoing Jobs

## Substations & Renewable Energy

### Indigrid (NER II Transmission Company Limited)

<b>Capacity of Plant</b>	: 400/132 KV 7X105 MVA, Substation
<b>Scope of Work</b>	: Comprehensive (integrated) basis operation & maintenance of 400/132 KV 7X105 MVA, Substation
<b>Location</b>	: Surajmani Nagar, Tripura
<b>Scope of Work</b>	: Comprehensive (integrated) basis operation & maintenance of 400/132 KV 7X105 MVA, Substation
<b>Location</b>	: PK Bari Nagar, Tripura

### Sterlite Power Grid Ventures Ltd

<b>Capacity of Plant</b>	: 400/220KV GIS
<b>Scope of Work</b>	: Operation of 400/220KV GIS Substation of NRSS-XXIX projects(NRSS)
<b>Location</b>	: Amargarh, Jammu & Kashmir.

### Sterlite Power Grid Ventures Ltd

<b>Capacity of Plant</b>	: 400/220 KV GIS
<b>Scope of Work</b>	: Comprehensive(integrated) Basis Operation & Maintenance of 400/220 KV ABB make GIS substation
<b>Location</b>	: Patran, Punjab.

### Power Grid Corporation Of India Limited

<b>Capacity of Plant</b>	: 765/400 kV Bhadla-II substation 765/400 Fatehgarh-II substation 400/220kV Kateshwar substation
<b>Scope of Work</b>	: Functional support services for operations at BHADLA-II, FATEHGARH-II & KOTESHWAR substations of NR-1 (Package B)
<b>Location</b>	: Rajasthan and Uttarakhand

### Power Grid Corporation Of India Limited

<b>Capacity of Plant</b>	: 765/400/220KV Substation
<b>Scope of Work</b>	: Maintenance works of 765 / 400 /230 or 220 kV Transmission lines under O&M in SRTS -II
<b>Location</b>	: Trivandrum, Pathanamthitta, Kochi, Trissur, Kozhikode, Kerala

### Power Grid Corporation Of India Limited

<b>Capacity of Plant</b>	: 765/400/220KV Substation
<b>Scope of Work</b>	: Maintenance works of 765 / 400 /230 or 220 kV Transmission lines under O&M in SRTS -II
<b>Location</b>	: Dharmapuri, Salem, Udumalpet, Trichy, Madurai, Tirunelveli, Kovilpatti, Tamilnadu

# O & M Experience - Ongoing Jobs

## Substations & Renewable Energy

### Power Grid Corporation Of India Limited

- Capacity of Plant** : 765/400/220KV Substation
- Scope of Work** : Maintenance works of 765 / 400 /230 or 220 kV Transmission lines under O&M in SRTS -II
- Location** : North Tamil Nadu & Pondy stations- Sriperumbudur, Kalivanthapattu, Thiruvalem, Hosur, Ariyalur, Neyveli, Pudhucherry

### Power Grid Corporation Of India Limited

- Capacity of Plant** : 765/400/220KV Substation
- Scope of Work** : Maintenance works of 765 / 400 /230 or 220 kV Transmission lines under O&M in SRTS -II
- Location** : Somanahalli, Kolar, Madhugiri (Tumkur), Hiriya, Harihara (Newhub), Yelahanka, Pavagada), Karnataka

### Clean Wind Power (RATLAM) Pvt. Ltd (Hero Future Energies Pvt. Ltd.)

- Capacity of Plant** : 220 /33 KV Pooling Substation at 100 MW
- Scope of Work** : Operation and Maintenance of 220 /33 KV Pooling substation at 100 MW , Badnawar, Ratlam Project
- Location** : Ratlam, Madhya Pradesh.

### Hero Wind Energy Private Limited (Hero Future Energies Pvt. Ltd.)

- Capacity of Plant** : 220 KV / 33 KV Pooling Substation - 120MW
- Scope of Work** : Operation and Maintenance Services for 220 KV / 33 KV Substation
- Location** : Gurvepalli, Andhra Pradesh.

### Hero Solar Energy Private Limited (Hero Future Energies Pvt. Ltd.)

- Capacity of Plant** : 33 MW Solar Park
- Scope of Work** : Operation & Maintenance of 33 MW Solar Power Plant
- Location** : PD Kote, Karnataka.

### Hero Solar Energy Private Limited (Hero Future Energies Pvt. Ltd.)

- Capacity of Plant** : 22 MW Solar Park
- Scope of Work** : Operation & Maintenance of 22 MW Solar Power Plant
- Location** : Kollegal, Karnataka.

# O & M Experience - Ongoing Jobs

## Substations & Renewable Energy

### South Budh – Hero Future Energies Pvt. Ltd, Inox Wind & Orange Power

**Capacity of Plant** : 220/33 KV Pooling Substation of 120 MW Wind Farm  
**Scope of Work** : Operation and Maintenance Services for 220/33 KV Substation  
**Location** : Khanapur, Maharashtra.

### Acciona Energy – Tupaddahalli Energy India Pvt. Ltd.

**Capacity of Plant** : 110/33 kV Pooling Substation of 100MW - Wind Farm  
**Scope of Work** : Operation and Maintenance of 110/33 Kv Pooling Substation 110kV and 33kV Transmission Lines  
**Location** : Singenahalli, Karnataka

### Larsen & Toubro Limited, Construction

**Capacity of Plant** : 2X50 MW Solar PowerProject  
**Scope of Work** : O&M For 1X106 MWp Solar Power Project  
**Location** : Thoothukudi, Tamilnadu

### JSW Renew Energy Two Limited

**Capacity of Plant** : 230KV/33KV Substation  
**Scope of Work** : Operation & Maintenance Of 2X150MVA, 230KV/33KV PSS  
**Location** : Tuticorin, Tamilnadu

### Hero Wind Energy Pvt Ltd

**Capacity of Plant** : 132/33 KV Pooling substation for 31.5 MW Wind Project  
**Scope of Work** : Operation and Maintenance of 132/33KV Pooling Substation  
**Location** : Zaheerabad, Telangana





# O & M Experience - Ongoing Jobs

## Substations & Renewable Energy



### Green Infra Solar Farms Limited

<b>Capacity of Plant</b>	: 20 MW Solar Park
<b>Scope of Work</b>	: Operation and maintenance at 20 MW Solar Power Plant
<b>Capacity of Plant</b>	: 5 MW Wind turbine Generator
<b>Scope of Work</b>	: Operation and maintenance at 5 MW Solar Park
<b>Location</b>	: Jodhpur, Rajasthan

### KEC International Limited

<b>Capacity of Plant</b>	: 11.54MWP / 10MW AC SPV power plant
<b>Scope of Work</b>	: Operation and Maintenance for 11.54MWP / 10MW AC SPV power plant
<b>Location</b>	: Parigi, Telangana

### KEC International Limited

<b>Capacity of Plant</b>	: 10.5 MWP / 10MW AC SPV power plant
<b>Scope of Work</b>	: Operation and Maintenance for 10.5 MWP / 10MW AC SPV power plant
<b>Location</b>	: Kothagadi, Telangana

### KEC International Limited

<b>Capacity of Plant</b>	: 11.69MWP / 10MW AC SPV power plant
<b>Scope of Work</b>	: Operation and Maintenance for 11.69MWP / 10MW AC SPV Power Plant
<b>Location</b>	: Peerampally, Telangana

# O & M Experience - Ongoing Jobs

## Process Industry

### Adani Mundra Solar Energy Ltd

**Capacity of Plant** : 2 GW Solar PV Panel Production Facility  
**Scope of Work** : Operations & Maintenance of Electrical Systems for 2 GW Solar PV Module Manufacturing line Facility  
**Location** : Mundra, Kutch, Gujarat

### Adani Mundra Solar Pvt Ltd

**Capacity of Plant** : 2 GW Solar PV Panel Production Facility  
**Scope of Work** : Utility - Operations & Maintenance of Electrical Systems for 2 GW Solar PV Cell Module Manufacturing Facility line of Mundra Solar PV Ltd  
**Location** : Mundra, Kutch, Gujarat

### Adani Mundra Technopark

**Capacity of Plant** : Solar Pv Plant  
**Scope of Work** : Operation of Electrical Services  
**Location** : Mundra, Kutch, Gujarat

### Bharat Aluminium Co. Ltd.

**Capacity of Plant** : 570 MTPA of Aluminium Processing Plant  
**Scope of Work** : Operation Assistance services at MRSDS  
**Location** : Korba, Chhattisgarh

### TATA Steel Limited

**Capacity of Plant** : 6 Million Tonnes Per Annum  
**Scope of Work** : Technical Manpower services contract for Pellet Plant  
**Location** : Kalinganagar, Odisha





# O & M Experience - Ongoing Jobs

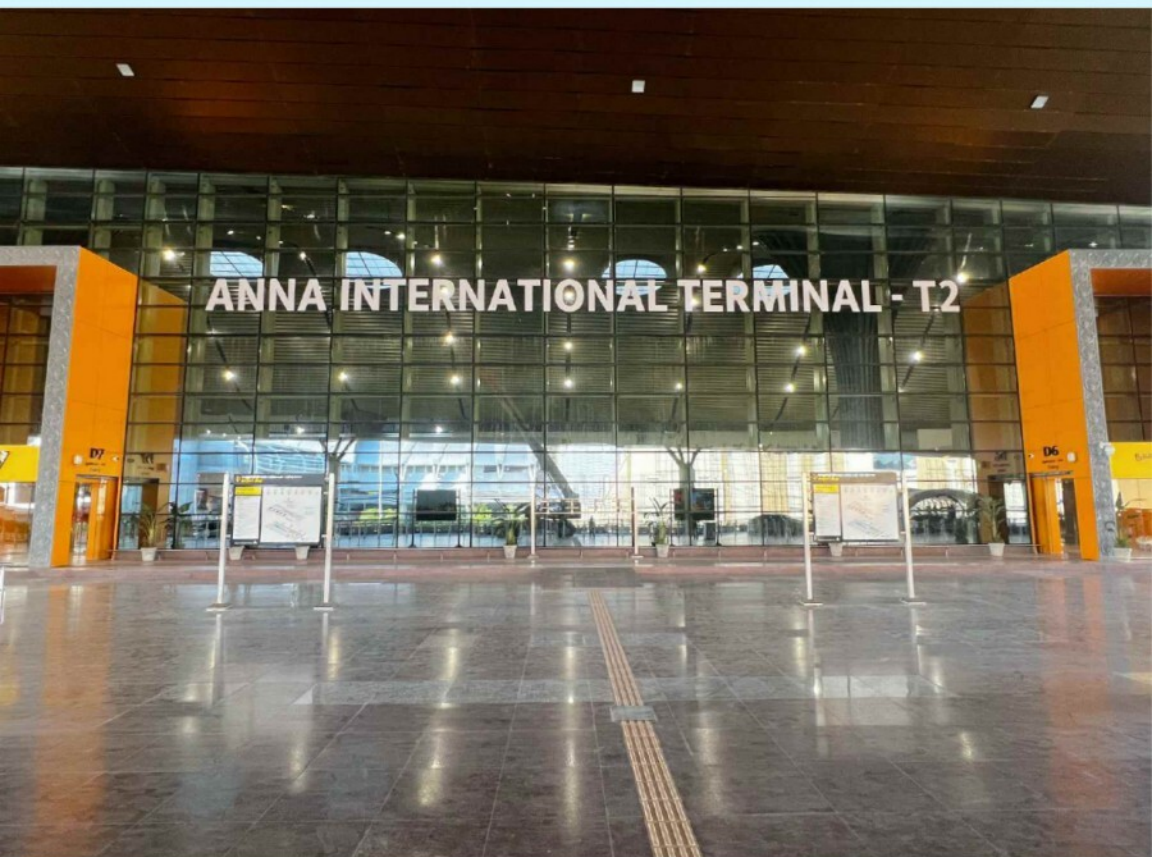
## Airport

### Airport Authority Of India

- Scope of Work** : Modernization of Chennai Airport (Ph-II), Chennai. SH: Providing technical, clerical staff and office attendants for Project Office
- Location** : Chennai, Tamilnadu

### Airport Authority Of India

- Scope of Work** : Operation and General Maintenance of E&M Installations in Operational Area, Power House & OTB at Trichy Airport (2022-2024)
- Location** : Trichy, Tamilnadu





# O & M Experience - Ongoing Jobs

## Railways

### Chennai Metro Rail Limited

- Scope of Work** : Providing Traction Maintenance Services For Traction Over Head Equipment And Power Supply Installations At 41 Metro Stations With 21 No. Under Ground And 20 No.Elevated Stations For Corridor-1 & Corridor-2 Of Phase-1 And Phase-1 Extension
- Location** : Chennai, Tamilnadu

### Bangalore Metro Rail Limited

- Scope of Work** : Comprehensive Annual Maintenance Contract (CAMC) of 33KV Switchgear Including Traction Transformers & Auxiliary Transformers, Battery Bank, ACDB, DCDB Etc for Phase-1 and Extension Station
- Location** : Bangalore, Karnataka



# O & M Experience - Remarkable Executions / Completed Power Plant

## **NTPC LIMITED – Kahalgaon Super Thermal Power Project**

<b>Capacity of Plant</b>	: 2340 MW Thermal Power Plant
<b>Scope of Work</b>	: ARC and Overhauling of Boiler & SWAS, TG & Auxiliaries, CCTV, LAB of stage-1 units and Station Fire Fighting System
<b>Location</b>	: Kahalgaon, Bihar

## **NTPC LIMITED – Lara Super Thermal Power Station**

<b>Capacity of Plant</b>	: 2X800 MW Thermal Power Plant
<b>Scope of Work</b>	: AMC of Construction Power for NTPC, Lara
<b>Location</b>	: Raigarh, Chhattisgarh

## **NTPC LIMITED – Sipat Super Thermal Power Station**

<b>Capacity of Plant</b>	: 2980 MW Thermal Power Plant
<b>Scope of Work</b>	: Complete C&I System of whole plant and overhauling job contract
<b>Location</b>	: Bilaspur, Chhattisgarh

## **NTPC LIMITED – Singrauli Super Thermal Power Station**

<b>Capacity of Plant</b>	: Stage-I: 5×200 MW, Stage-II: 2×500 MW Thermal Power Plant
<b>Scope of Work</b>	: Battery Maintenance of ST 11 and 2, HT/LT Switchgear Maint of ST1, Housekeeping in EMD ST 2 and other Electrical Works in EMD During UNIT O/H at Singrauli
<b>Location</b>	: Singrauli, Madhya Pradesh

## **Utility Powertech Limited – NTECL** (A Joint venture of Reliance Infrastructure Ltd. & NTPC Ltd.)

<b>Capacity of Plant</b>	: 3X500 MW Thermal Power Plant
<b>Scope of Work</b>	: Providing Operation Assistance works of CHP PART - A
<b>Location</b>	: Vallur, Chennai, TamilNadu

## **Utility Powertech Limited** (A Joint venture of Reliance Infrastructure Ltd. & NTPC Ltd.)

<b>Capacity of Plant</b>	: 2X 320 MW Combined Cycle Power plant (Unit -1)
<b>Scope of Work</b>	: Operation Services at RGPP
<b>Location</b>	: Ratnagiri, Maharashtra.

# O & M Experience - Remarkable Executions / Completed Power Plant

## Utility Powertech Limited (A Joint venture of Reliance Infrastructure Ltd. & NTPC Ltd.)

**Capacity of Plant** : 2X 320 MW Combined Cycle Power plant  
**Scope of Work** : Local Area Operation Works in Power Block  
**Location** : Ratnagiri, Maharashtra

## Utility Powertech Limited (A Joint venture of Reliance Infrastructure Ltd. & NTPC Ltd.)

**Capacity of Plant** : 2X 320 MW Combined Cycle Power plant  
**Scope of Work** : Carrying out Operation Service activities  
**Location** : Ratnagiri, Maharashtra

## Karnataka Power Corporation Ltd - Bellary Thermal Power Station

**Capacity of Plant** : 2X500 MW Coal-fired Units  
**Scope of Work** : BTPS Unit-2 CHP Routine, Breakdown and Overhauling works of Electrical Equipments  
**Location** : Bellary, Karnataka

## Karnataka Power Corporation Ltd - Bellary Thermal Power Station

**Capacity of Plant** : 2X500 MW Coal-fired Units  
**Scope of Work** : BTPS Routine, breakdown and annual overhauling works of I&C system of CHP-1&2  
**Location** : Bellary, Karnataka

## Bharat Aluminium Company Limited

**Capacity of Plant** : 4X 300 MW & 4X 135 MW Combined Cycle Power Plant  
**Scope of Work** : 1. ECI Maintenance Contract for CPP 1200 MW  
 2. ECI Maintenance Contract for CPP 540 MW  
 3. AMC of Switchyard and Rectifier  
**Location** : Korba, Chhattisgarh.

## Ideal Energy Projects Ltd

**Capacity of Plant** : 1X270MW Thermal Power Plant  
**Scope of Work** : Electrical Maintenance and Electrical Testing work of main plant  
**Location** : Bela, Maharashtra.

# O & M Experience - Remarkable Executions / Completed Power Plant

## TAQA Neyveli Power Company Pvt. Ltd

<b>Capacity of Plant</b>	: 250 MW Lignite Fired Power Plant
<b>Scope of Work</b>	: Maintenance of 250 MW (Turbine DKY2-IN41B & Generator 294.12 MVA), 220 KV SS Thermal Power Plant), Repair / service of Mechanical Rotating Equipment Electrical/ Generators, motors, HVAC & Lightning.
<b>Location</b>	: Virudhachalam, TamilNadu.

## Neyveli Lignite Corporation Limited

<b>Capacity of Plant</b>	: 2X210 MW Thermal Power plant
<b>Scope of Work</b>	: Biennial Contract for Regular and Running Maintenance of Electrical Equipments.
<b>Location</b>	: Neyveli, TamilNadu.

## JSW Energy Limited - SBU-1

<b>Scope of Work</b>	: C & I Works for SBU1, CPP1, CPP4 & SBU2
<b>Location</b>	: Bellary, Karnataka.

## NLC Tamilnadu Power Limited (NTPL)

<b>Capacity of Plant</b>	: 2X500 MW Thermal Power plant
<b>Scope of Work</b>	: 1. Outsourced Annual Maintenance Contract For Regular Maintenance (Preventive Maintenance And Breakdown Maintenance Work) and Running Maintenance Of Electrical System at NTPL 2. Outsourcing Contract for CMG & EEMG field testing at NTPL
<b>Location</b>	: Tuticorin, Tamil Nadu.

## STEAG Energy Services (India) Pvt.ltd

<b>Capacity of Plant</b>	: 4X600MW Thermal Power Plant (IPP) & 400KV Substation
<b>Scope of Work</b>	: 1.Operation And Maintenance of 4 X 600 MW IPP, Units – I & II switchyard 2. Operation And Maintenance of New 400 KV Switchyard
<b>Location</b>	: Jharsuguda, Odisha.

## Talwandi Sabo Power Limited

<b>Capacity of Plant</b>	: 3 X 660 MW Thermal Power plant
<b>Scope of Work</b>	: Operation And Maintenance of Electrical and C&I Works at 3 x 600 MW Thermal Power Plant
<b>Location</b>	: Mansa, Punjab.





# O & M Experience - Remarkable Executions / Completed Power Plant

## Hindustan Zinc Limited

**Capacity of Plant** : 1X80 MW Captive Power Plant  
**Scope of Work** : Erection & Commissioning Services  
**Location** : Zawar, Rajasthan | Chanderia, Rajasthan

## Hindustan Zinc Limited

**Capacity of Plant** : 1X80 MW Captive Power Plant  
**Scope of Work** : Electrical Testing & Commissioning Services for Debari 210 K Project & Providing supervisory services for O&M, testing, E&C of Electrical equipment  
**Location** : Debari, Rajasthan & Dariba, Rajasthan.

## Nuclear Energy

### NPCIL – Kudankulam, Nuclear Power Plant, TamilNadu.

**Capacity of Plant** : 2X1000 MW Nuclear Power Plant  
**Scope of Work** : Maintenance of 6KV Switchgears at KKNPP 1&2

**Capacity of Plant** : 2X1000 MW Nuclear Power Plant  
**Scope of Work** : Maintenance of electrical part of process systems in auxiliary plants outside of operating island at KKNPP

**Capacity of Plant** : 2X1000 MW Nuclear Power Plant  
**Scope of Work** : Maintenance of Electrical Part of Process Systems in Main Plant Area inside Operating Island at KKNPP-1&2

**Capacity of Plant** : 2 × 1000 MW Nuclear Power plant  
**Scope of Work** : Providing the Office and Supervisory Services for CSR and Civil Works

# O & M Experience - Remarkable Executions / Completed

## Nuclear Energy

### NPCIL – Kudankulam, Nuclear Power Plant, TamilNadu.

**Capacity of Plant** : 2 × 1000 MW Nuclear Power plant

**Scope of Work** : Routine Operation and Monitoring of various systems & Equipments of KKNPP Unit- 1

**Capacity of Plant** : 2 × 1000 MW Nuclear Power plant

**Scope of Work** : Contract for electrical maintenance of process systems such as LT pump motors, LT ventilation motors, valves, ventilation dampers, local control panels (LCPs), motor operated doors, electrical heater assemblies etc. within operating island boundary

**Capacity of Plant** : 2 × 1000 MW Nuclear Power plant

**Scope of Work** : Contract for Maintenance of 380V MCCs and ACDBs

**Capacity of Plant** : 2 × 1000 MW Nuclear Power plant

**Scope of Work** : Operation and maintenance of commissioned and charged Electrical Equipment in KKNPP Unit - 2

**Capacity of Plant** : 2 x 1000 MW Nuclear Power

**Scope of Work** : Services Contract for Operation and maintenance of the Electrical installation of infrastructure at KKNPP Anuvijay Township

**Capacity of Plant** : 2 × 1000 MW Nuclear Power plant

**Scope of Work** : Commissioning of Electrical systems with supply of Man power and Testing Instruments

**Capacity of Plant** : 2 x 1000 MW Nuclear Power

**Scope of Work** : Contract for Maintenance of Battery Banks at KKNPP - 1&2

### NPCIL – Tarapur Atomic Power Station, Maharashtra

**Capacity of Plant** : 2X 160 MW Nuclear Power plant

**Scope of Work** : Providing Manpower services for routine Maintenance activities in 220 KV/33KV TAPS 1 & 2 Switchyard

**Capacity of Plant** : 2X 540 MW Nuclear Power plant

**Scope of Work** : Operation and Maintenance of 220KV & 400KV Switchyard, 33KV /6.6KV outdoor Switchyard along with its associated switchgears and Assistance in round the clock shift of main plant electrical systems

# O & M Experience - Remarkable Executions / Completed

## Substations & Renewable Energy

### South East U.P. Power Transmission Company Limited

**Capacity of Plant** : 400 KV / 220 KV GIS  
**Scope of Work** : Operation and Maintenance Contract for 400 KV / 220 KV Rewa Road GIS Substation including Testing Works  
**Location** : Allahabad, Uttar Pradesh.

### Saurya Urja Company of Rajasthan Limited (SURA)

**Capacity of Plant** : 2200 KV Pooling SS 1000 MW Solar Power Park  
**Scope of Work** : Annual Operation and Maintenance of 220 KV Pooling Substation #1- LHS at 1000 MW Solar Power Park, Bhadla III  
**Location** : Jodhpur, Rajasthan

### South East U.P. Power Transmission Company Limited

**Capacity of Plant** : 765/400 KV AIS Substation  
**Scope of Work** : Operation & Maintenance Contract for 765/400 KV Mainpuri AIS Substation  
**Location** : Mainpuri, Uttar Pradesh.

### Bharat Heavy Electricals Limited

**Capacity of Plant** : 110/11 KV Substation  
**Scope of Work** : Operation and Maintenance of 110KV /11 KV Substation  
**Location** : Thiruchirapalli, TamilNadu.

### National Institute of Ocean Technology

**Capacity of Plant** : Utility Substation  
**Scope of Work** : Providing non comprehensive Electrical maintenance  
**Location** : Pallikaranal, Chennai, TamilNadu.

### Gujarat Energy Transmission Corporation Limited

**Capacity of Plant** : 66 KV Substations  
**Scope of Work** : Operation and Maintenance contract for 66 KV Substations(7 Substations)  
**Location** : Vadodara, Gujarat.



# O & M Experience - Remarkable Executions / Completed Substations & Renewable Energy

## Siemens Gamesa Renewable Power Pvt Ltd

**Capacity of Plant** : 110/33 KV Substation  
**Scope of Work** : Operation and Maintenance of 110/33 kV Substation  
**Location** : Lingasugur, Karnataka.

## Siemens Gamesa Renewable Power Pvt Ltd

**Capacity of Plant** : 132/33KV Substation  
**Scope of Work** : Operation and Maintenance of 132/33KV SS at Sun Edison  
**Location** : Yettakal, Andhra Pradesh

## Siemens Gamesa Renewable Power Pvt Ltd

**Capacity of Plant** : 132/33KV Substation  
**Scope of Work** : Operation and Maintenance for 132/33KV Substation capacity (2X50MVA transformer) - Phase I & II  
**Location** : Taggupatri, Andhra Pradesh.

## Suzlon Infrastructure Limited

**Capacity of Plant** : 220/33 KV Substation  
**Scope of Work** : Operation and Maintenance contract for 220/33 KV Substation and its ring main units  
**Location** : Coimbatore, TamilNadu.

## Vestas Wind Technology India Pvt.ltd

**Capacity of Plant** : 66KV Substations  
**Scope of Work** : Operation and Maintenance of 66KV Sub-stations and Lines  
**Location** : Hiranaholli, Karnataka.

## Sembcorp Green Infra Limited

**Capacity of Plant** : 66/33KV Substation  
**Scope of Work** : Operation and Maintenance of 66/33KV Sub-station with line  
**Location** : Bharmasagar, Karnataka & Telgi, Karnataka.

# O & M Experience - Remarkable Executions / Completed

## Steel Industry

### Tata Steel Limited

**Capacity of Plant** : 5 Million of Production Plant Tonnes Per Annum  
**Scope of Work** : Technical Support for Electrical Maintenance  
**Location** : Kalinganagar, Odisha.

### Maan Steel and Power Limited

**Capacity of Plant** : 1x12MW CPP  
**Scope of Work** : Supervision of electrical commissioning and checking of relay setting  
**Location** : West Bengal

## Process Industry

### Vedanta Limited

**Capacity of Plant** : 1215 MW Captive Power Plant  
**Scope of Work** : AMC for Maintenance of Vedanta Substations  
**Location** : Jharsuguda, Odisha.

### Vedanta Limited

**Capacity of Plant** : 1215 MW Captive Power Plant  
**Scope of Work** : AMC Electrical of Switchyard and Rectifier  
**Location** : Jharsuguda, Odisha.



# O & M Experience - Remarkable Executions / Completed

## Oil and Gas

### Vedanta Cairn India Limited – Cairn Oil & Gas Division

<b>Scope of Work</b>	: 1. Mechanical and Production Manpower 2. Provision for Instrument Maintenance Manpower
<b>Location</b>	: Barmer, Rajasthan

### Vedanta Cairn India Limited – Cairn Oil & Gas Division

<b>Scope of Work</b>	: Provision of LV & HV Switch Board Maintenance Services at MBA Fields
<b>Location</b>	: Mangala, Bhagyam, Aishwarya, Barmar, Rajasthan

### Vedanta Cairn India Limited

<b>Scope of Work</b>	: Provision of Electrical maintenance Manpower
<b>Location</b>	: Barmer, Rajasthan

### Vedanta Cairn India Limited

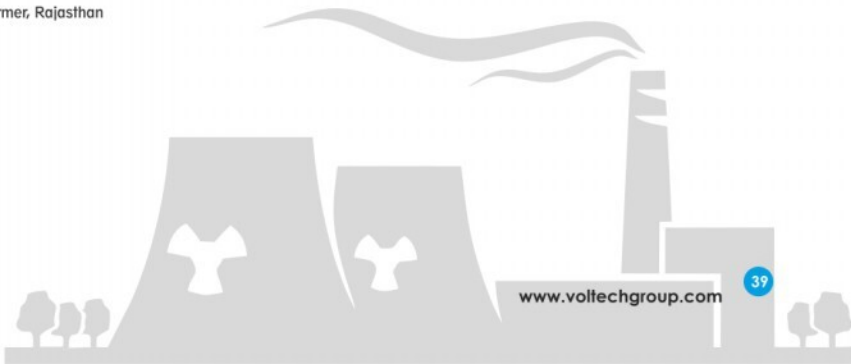
<b>Scope of Work</b>	: LV & HV Switch Board Maintenance services
<b>Location</b>	: Barmer, Rajasthan

### Larsen & Toubro Ltd. (BPCL)

<b>Capacity of Plant</b>	: 33/6.6KV Substation
<b>Scope of Work</b>	: O & M Package for LT & HT Substations
<b>Location</b>	: Cochin, Kerala.

### Cairn India Limited

<b>Capacity of Plant</b>	: 33 kV Substations
<b>Scope of Work</b>	: Operation And Maintenance Of Onshore Wellpads Electrical Package Substations – Ehouses On Manpower Basis Terminal
<b>Location</b>	: Barmer, Rajasthan



# O & M Experience - Remarkable Executions / Completed

## Railways

### Chennai Metro Rail Limited

**Scope of Work** : Providing Electrical Maintenance Services for Traction Over Head Equipment and Power Supply Installations at 32 Metro Stations under Ground, Elevated & Depot Sections for Corridor-1 & Corridor-2

**Location** : Chennai, Tamilnadu

## Airport

### Airport Authority Of India

**Scope of Work** : ARMO of E&M Installations at Tuticorin Airport; SH : Annual Operation and Maintenance of E&M Installations

**Location** : Tuticorin, Tamilnadu







# ISO Certification



ISO 9001 : 2015



ISO 14001 : 2015



ISO 45001 : 2018

## Our Infrastructure



**Corporate Office - Voltech Eco Tower**



**Executive Cabin**



**Employees Workspace**



**Conference Hall**



**Training Room**



**Aadukalam (Recreation Room)**



**Board Room**



**Reception Area**



**Lobby**



**Cafeteria**



## Our Manufacturing Facilities



### **Voltech Techno Park - I**

*Relays, Electronics & Solar Manufacturing Facility*



### **Voltech Techno Park - II**

*Flameproof, Valves & Skill Development Centre*



### **Voltech Techno Park - IV**

*Control & Relay Panel Manufacturing Facility*





### Voltech Techno Park - III

*Power & Distribution Transformers Manufacturing Facility*



**Switchgear Manufacturing Facility**



**Fabrication Plant**

### Voltech Techno Park - V

# Clientele



Chennai Metro Rail Limited



Chennai Metro Rail Limited



GAIL



NIOT

SIEMENS Gamesa  
RENEWABLE ENERGY

SUZLON

Vestas

INOXWIND  
Energizing INDIA

M<sup>+</sup>  
SOLAR  
AMPLUS SOLAR



sembcorp

steag

Sterlite Power



BIPCL



TAQA



CAIRN



CPCL



Bharat Petroleum



BPC



KARNATAKA POWER CORPORATION LTD

GREEN INFRA  
Renewable Energy



acciona



KSK  
Power from knowledge

HERO FUTURE ENERGIES  
planet positive power

RELIANCE  
Power



## Global Locations

**ASEAN :** Cambodia | Indonesia | Laos | Myanmar | Malaysia | Singapore | Thailand | Vietnam

**SAARC :** Bangladesh | Nepal | Sri Lanka

**Middle East Countries :** Bahrain | Iraq | Kuwait | Oman | Qatar | Saudi Arabia | U.A.E

**Africa :** Algeria | Egypt | Ivory Coast | Kenya | Mali | Nigeria | Senegal | Tunisia | Tanzania | Uganda | Ghana | Togo

**Europe:** Germany | Spain | Turkey | United Kingdom

**CIS Countries:** Russia, Uzbekistan

**Americas:** USA, Brazil, Chile

**Other Countries :** Australia | Japan | South Korea

## India Locations

Bangalore | Bhubaneswar | Bilaspur | Chennai | Guwahati | Hyderabad | Kochi | Kolkata  
Mumbai | New Delhi | Raipur | Vadodara | Lucknow



[www.voltechgroup.com](http://www.voltechgroup.com)

### **Corporate Office**

Voltech Eco Tower, No.2/429, Mount Poonamallee Road,  
Ayyapanthangal, Chennai - 600 056  
Ph : +91-44-43978000 | Fax : +91-44-42867746  
Email : [vomspl@voltechgroup.com](mailto:vomspl@voltechgroup.com)

Follow us on

